



parallel debugging add-in

Allinea DDTLite – True parallel debugging for Microsoft Visual Studio®



The Allinea DDTLite add-in for Microsoft Visual Studio® gives you total control of parallel and multi-threaded applications

Incredibly easy to install and use - increase your parallel productivity within minutes

Puts you in control of your application whether working on a workstation or on a Microsoft HPC cluster

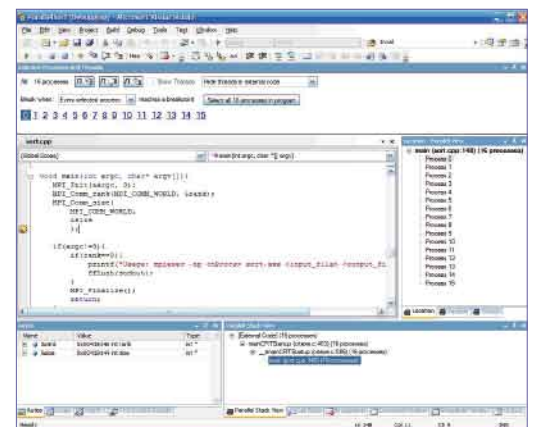
Takes the industry's best parallel debugging solutions and applies them to the Microsoft Visual Studio® environment

Debug programs written in C, C++, C#, Python, Fortran and all .NET languages

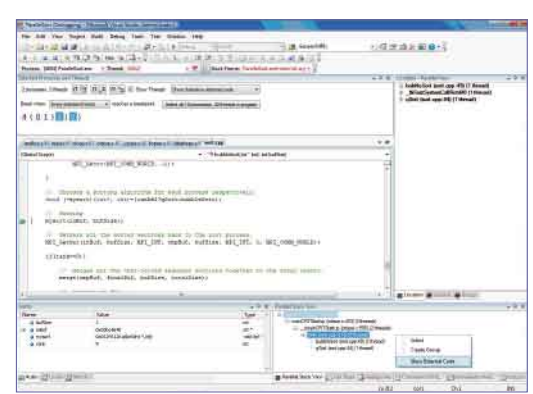
The only truly parallel debugger add-in for Microsoft Visual Studio® optimised for multi-threaded and MPI code

Licence scales to suit your parallel debugging requirements from 4 to 32 visible processes or threads

Entry level licence for multi-threaded debugging on a single workstation



Clean, Intuitive Interface



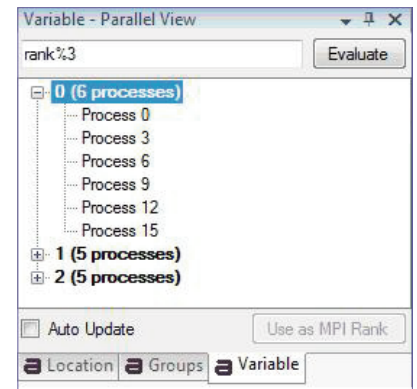
Fully Integrated into Visual Studio®

Scalable Intuitive Integrated

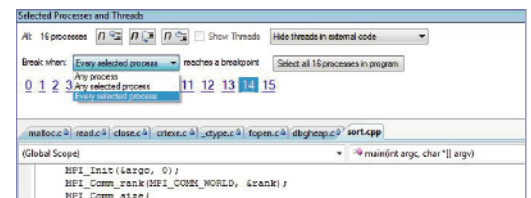
- Set breakpoints quickly and easily for processes and threads; individually, by user selected groups or as a whole (barrier)
- Step processes and threads into, out of or over functions; individually, by user selected groups or as a whole
- Compare values across multiple processes and threads, grouping the results by equivalence
- Create groups of processes and threads from code logic either using the variable - parallel view or parallel stack view
- Automatically label processes with their MPI rank rather than their system process ID
- View the location of every process and thread simultaneously using the parallel stack view
- Licensing model: use the same licence for MPI or multi-threaded code
- Enhances Microsoft Visual Studio® support for all multi-threaded, MPI and mixed-mode programs

COMPATIBILITY

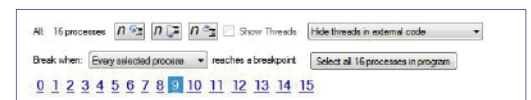
- Available for Microsoft Visual Studio® 2008 SP1
- Compatible with all Microsoft Visual Studio® supported platforms
- Compatible with all Microsoft Visual Studio® supported MPIs
- Compatible with all Microsoft Visual Studio® supported compilers



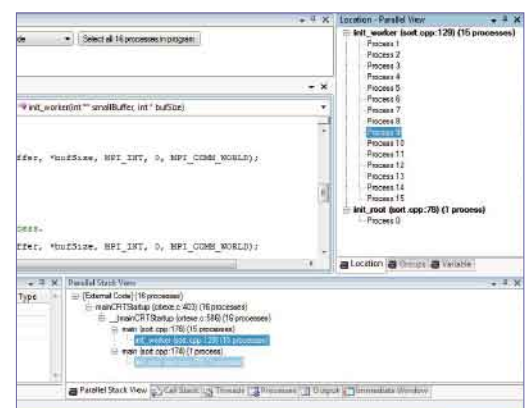
Compare Variables across Processes and Threads



Add Parallel Breakpoints



Control Processes and Threads



Visualize Process and Thread Location with the Parallel Stack View